



GMT MONTHLY MEMBERSHIP PROGRESS REPORT

Results as of: 4/30/2017

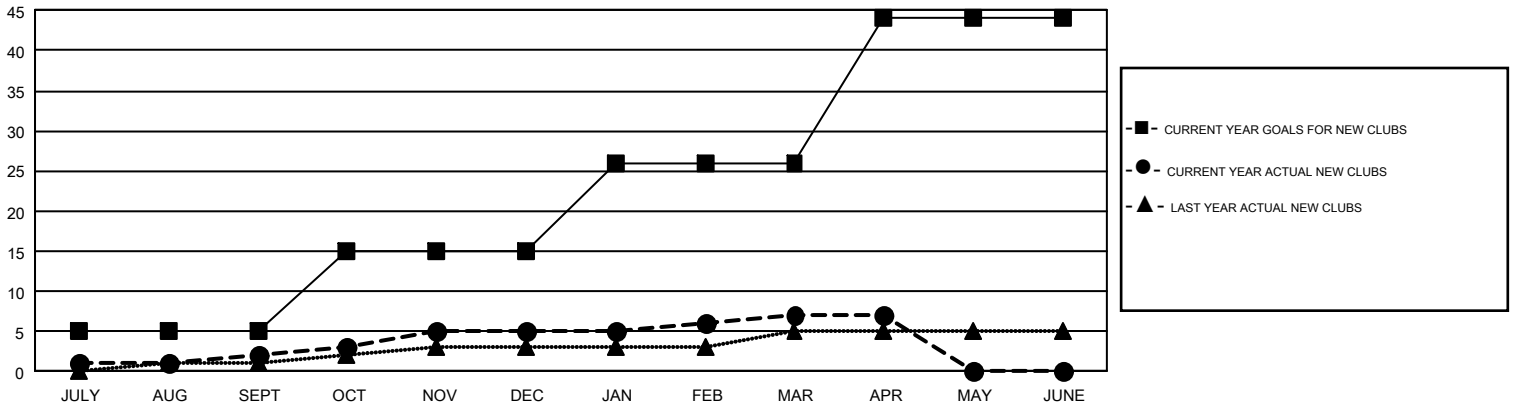
GMT Constitutional Area 1, Group B

GMT: CINDY GREGG

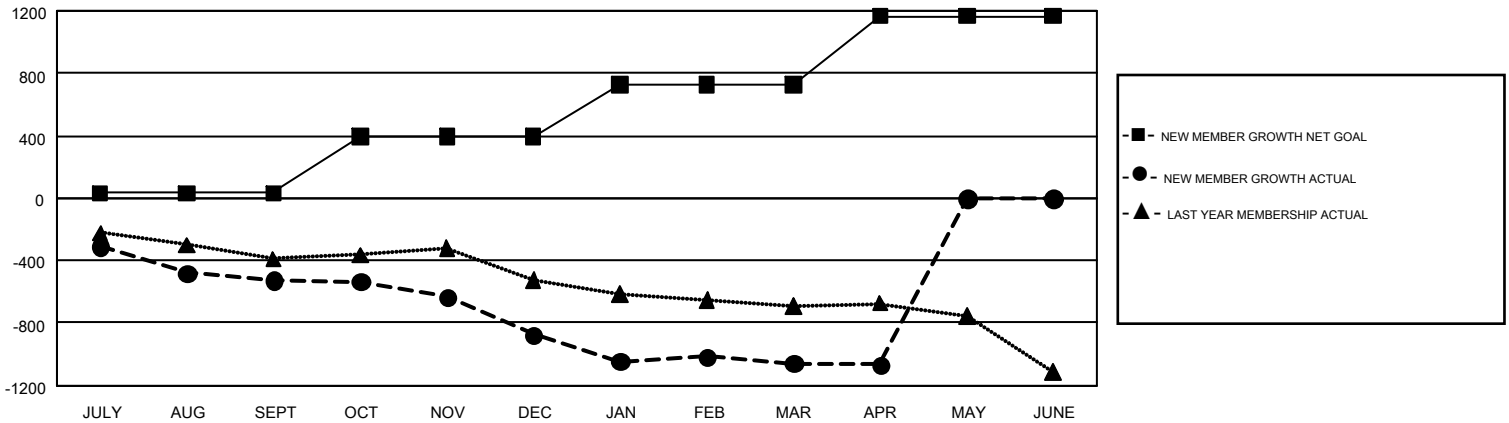
REPORT DOES NOT INCLUDE CLUBS IN UNDISTRICTED AREAS.

Clubs				Members			
RESULTS FOR 2016-2017				RESULTS FOR 2016-2017			
QUARTER	NEW CLUB GOAL	NEW CLUBS	DROPPED CLUBS	QUARTER	NEW MEMBER GROWTH NET GOAL (not reinstated or transfers)	NEW MEMBER GROWTH ACTUAL (not reinstated or transfers)	DROPPED MEMBERS ACTUAL (including transfers)
JULY/AUG/SEPT	5	2	6	JULY/AUG/SEPT	33	674	1,201
OCT/NOV/DEC	10	3	8	OCT/NOV/DEC	360	823	1,172
JAN/FEB/MAR	11	2	8	JAN/FEB/MAR	337	931	1,113
APR/MAY/JUNE	18	0	1	APR/MAY/JUNE	437	297	306

GOALS AND ACTUAL NEW CLUBS CUMULATIVE



GOALS AND ACTUAL MEMBERS CUMULATIVE



DROPPED CLUBS: 23	890 CLUBS OF 1,569 ADDED 1 OR MORE NEW MEMBERS	GENDER DISTRIBUTION
DROPPED MEMBERS	CLICK HERE FOR CUMULATIVE MEMBERSHIP DATA	MALE 30,757 (72.97%)
DECEASED 737		FEMALE 11,393 (27.03%)
CLUB CANCELLED 156		TOTAL FAMILY UNIT MEMBERS 7,870
OTHER 2,896		FAMILY MEMBERS PAYING HALF DUES 4,035
TOTAL 3,789		